

SAP MII: CHALLENGES AND STRENGTHS

Manufacturing Integration and Intelligence

Why MII – The Exponentia Experience



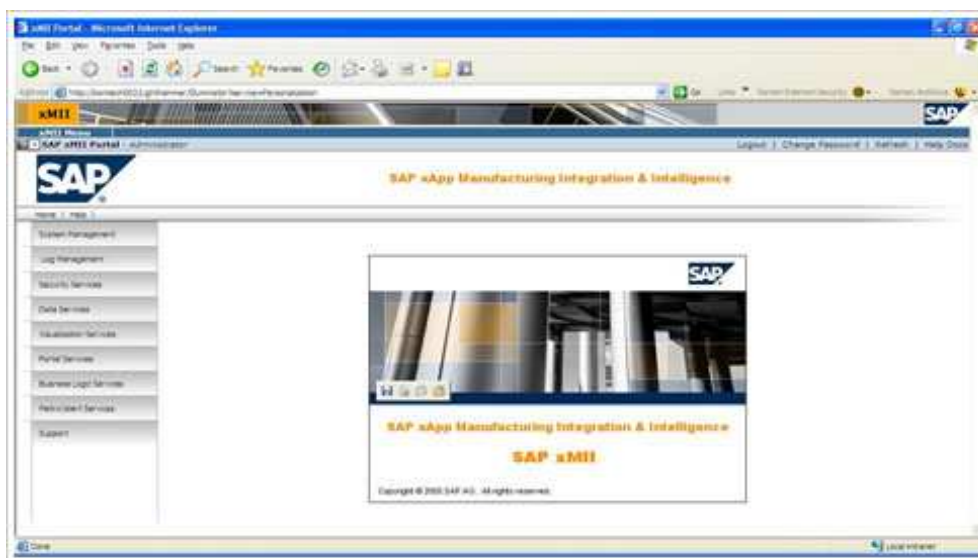
Exponentia teams have experience with many complex implementation projects and challenges in the manufacturing sector. Our experience shows that SAP MII is the best solution available in the market for development of Operational Excellence Applications and can be used to leverage some important strategic initiatives in the company, such as Lean Manufacturing, Real Time Performance Management, Six Sigma, Overall Equipment Effectiveness (OEE) and Plant to Supply Chain Integration (P2SC).

The Business benefits include:

- **Lower total cost of ownership.** SAP MII provides real-time connectivity between the shop floor and your ERP system. Prebuilt, standards-compliant connectors significantly reduce initial costs, complexity, and total cost of ownership.
- **Higher productivity for shop-floor personnel.** The solution aggregates data from multiple systems to deliver useful information to plant employees through alerts, reports, and key performance indicators (KPIs). A single view of analytic information through role-based, configurable dashboards enables fast, accurate decision-making.
- **Continuous improvement in processes and performance.** SAP MII delivers real-time analytics that enhance manufacturing performance. Production personnel can monitor,

measure, and control process-improvement initiatives, including Six Sigma, Lean manufacturing, and right-first-time manufacturing.

- **Superior asset usage.** With SAP MII, you can take advantage of asset-to-asset and plant-to-plant comparisons that enable benchmarking, better asset usage, and rationalization of poorly performing assets.
- **Faster time to value.** SAP MII can usually be implemented within 90 to 120 days, delivering rapid returns on investment.



SAP MII Administration Page

SAP MII Insight

This platform allows Exponentia US Inc. consultants and application engineers to develop and deploy customized solutions without the need to create from scratch. Our consultants have engaged in MII implementation which includes architecture and application design at client sites such as Monsanto and Sara Lee Corporation.

This work methodology, using an advanced systems integration framework, allows the reduction of implementation costs as well as the Total Cost of Ownership (TCO) of the final solutions delivered to our customers.

SAP MII allows a broad integration of all company systems through Composite Applications creation. This approach gives agility in the integration of new businesses processes and in the existent processes modification and optimization, eliminating the existence of customized interfaces with difficult maintenance and high TCO.

The suite of tools supplied by SAP MII makes it possible to obtain the maximum return of applications already existent in the company, without the need to create a new system and/or unnecessarily duplicate data in intermediate layers. This is a key reason for our on-time projects implementation, based on the use of the XML standard format for different legacy systems data normalization on top of a services oriented architecture (SOA).

History

SAP MII was originally developed by the American company Lighthammer Software Development Corporation, under the name of Collaborative Manufacturing Suite (CMS).

CMS was so innovative at the time that it allowed Lighthammer to have a consistent and profitable annual growth since 2000. The technology, totally based on SOA, made it possible for Lighthammer to deliver a diversified tool for construction of Composite Applications to over 180 clients and 500 installations, all over the world. Among these global customers are Dow Corning, Whirlpool, Celanese, Monsanto, Sara Lee, Chevron and others, who use the MII platform for the development of applications targeted to Lean Manufacturing, 6 Sigma, Operational Excellence, Manufacturing Execution System (MES), Overall Equipment Effectiveness (OEE) and Real Time Performance Management (RTPM).

With SAP's Lighthammer acquisition in June 2005, the CMS, that already had the certification "Powered by Netweaver" was also incorporated into the SAP solutions portfolio as an xApp™ of the Netweaver platform.

SAP is registered trademark of SAP AG in Germany and in several other countries all over the world. Data contained in this document serves informational purposes only.